



# Suggestions from Mozambique's Zambezi Delta



Dominic Wodehouse PhD, Executive Director  
Mangrove Action Project  
IUCN Mangrove Specialist Group

[dominic@mangroveactionproject.org](mailto:dominic@mangroveactionproject.org)  
+63 919 006 7841



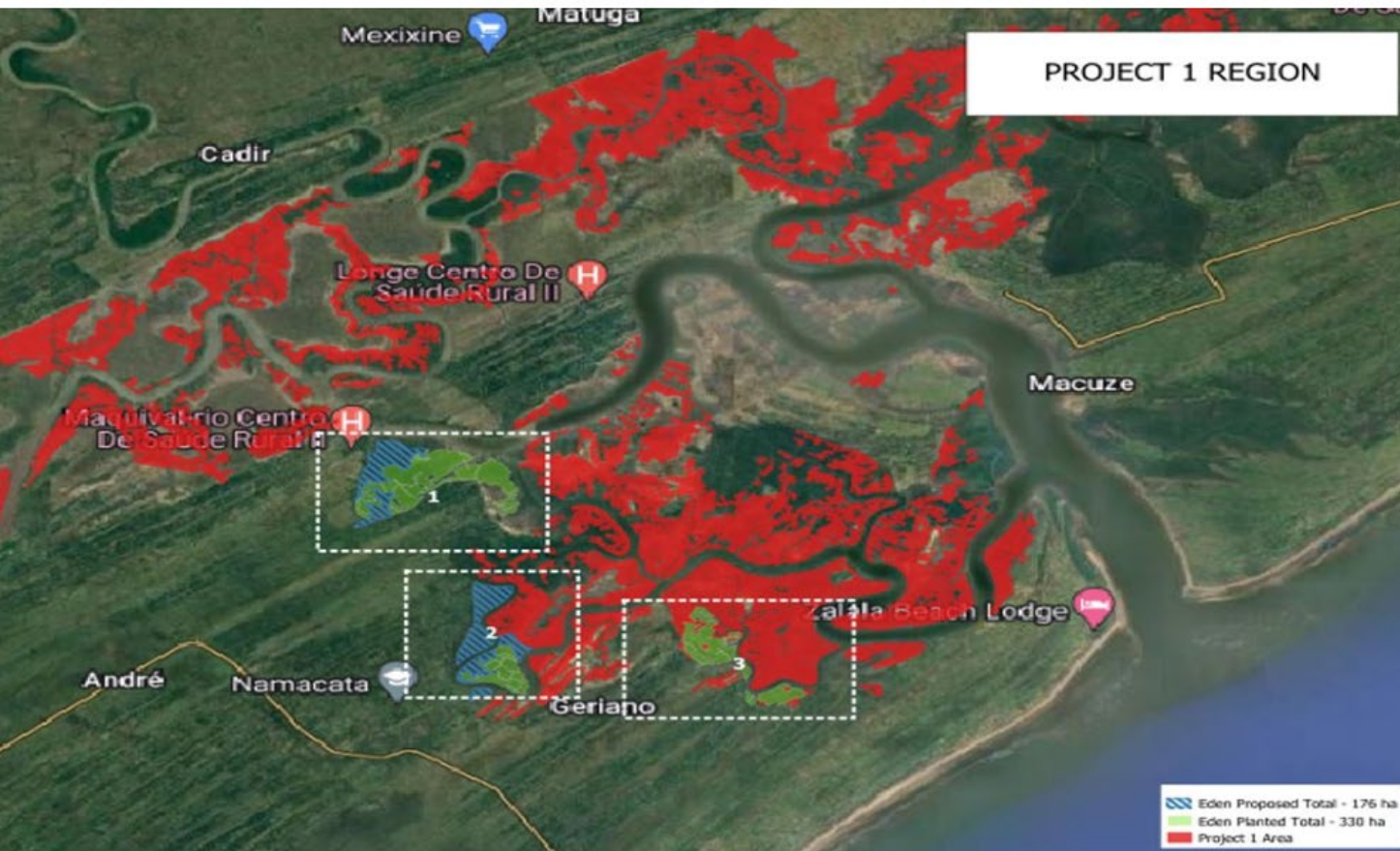


# Zambezi Delta, Mid-Mozambique



My role: full disclosure

What's happened previously? Great detailed work by Silvestrum



- Area categorised into 3 layers
- We focused on the worst layer
- Polygons outlined these areas. Sampled random plots within them

Eden Mozambique's baseline report 2024, drawn from Silvestrum's Initial Site Report.





Image © 2024 Airbus  
Map Data © 2023 AND

Google Earth



What  
does it  
look like  
on the  
ground?







Salt pans and back-mangrove barrens





Or no sensible space to plant



# Reality on-site

- Large trees cut for charcoal
- Small material used for cooking
- Very little natural regeneration
- Many places looked very dry with poor, degraded soils. No OM
- High salinity (30s ppt, 40s ppt)
- Many areas flat: hydrological channels poorly defined. Eroded by storms?
- Area regularly 're-set' by cyclones and flooding





Not much point planting here as they will trample what they don't eat





What generalized lessons can we learn?



Different or supplementary strategy for finding sites?  
Not random points within the polygons but survey  
the edges of the big channels, working inwards



Because the hydrology is  
better and the salinity lower





# Clear zoning exhibited (within salinity constraints)

*Heritiera*

*Avicennia*

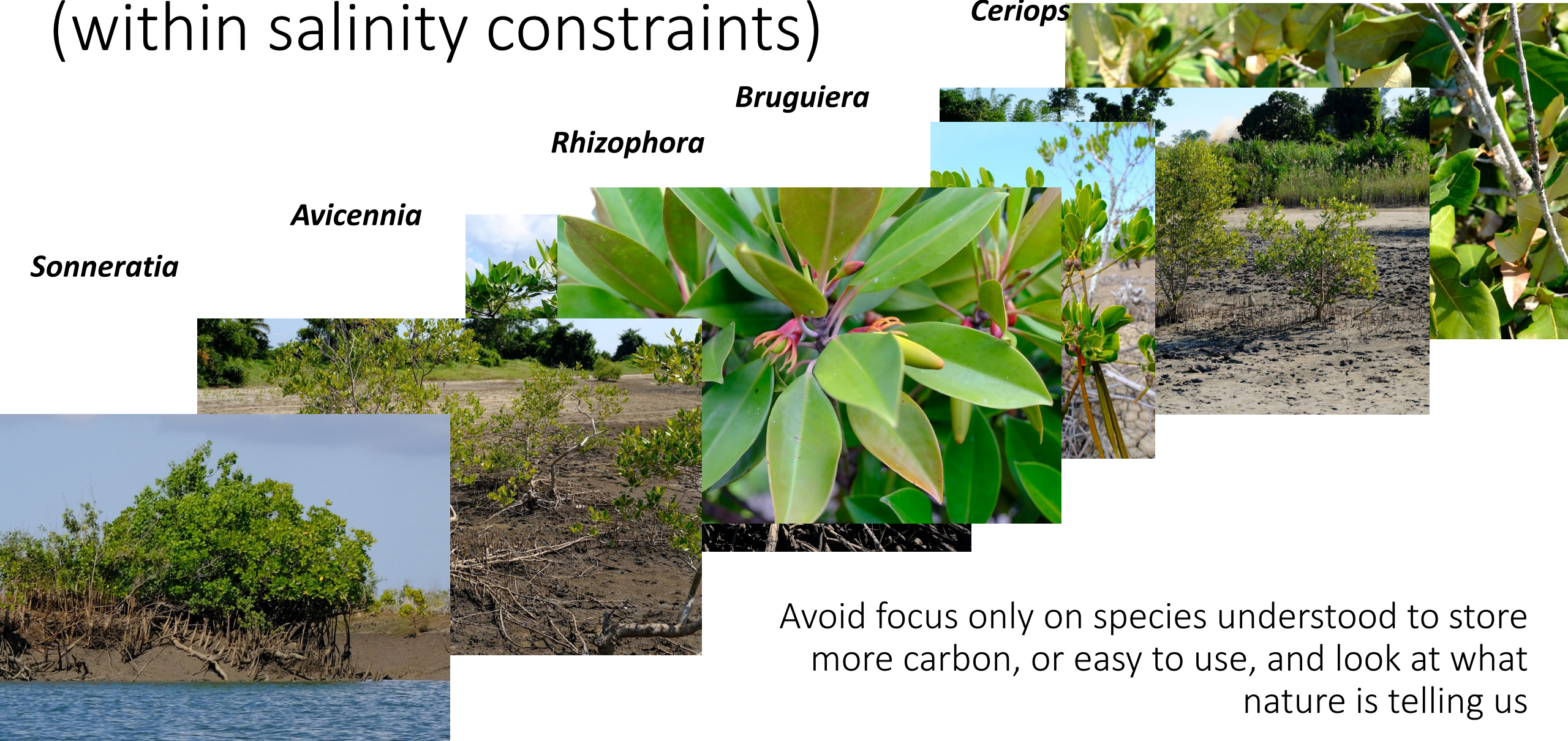
*Ceriops*

*Bruguiera*

*Rhizophora*

*Avicennia*

*Sonneratia*



Avoid focus only on species understood to store more carbon, or easy to use, and look at what nature is telling us



Observe fragment by fragment, what is nature telling us? Natural regen? Halophytes? Salt deposits?





Available areas fragmented. How to describe and later verify?





Why plant in lines? Close to stumps, and existing plants





Provide time / resources for channel improvements











Provide time / resources for trust building, learning from each other, conservation activity, awareness raising, socio-economic work, capacity building, *before* planting





Community forest management, extraction rules, patrols etc, *before* planting. Essential for long-term conservation. Must come from the community, not outside





# Need community agreement of sustainable harvesting practices





Time for a BCI *social* science  
working group?





# Suggestions from Mozambique's Zambezi Delta



Dominic Wodehouse PhD, Executive Director  
Mangrove Action Project  
IUCN Mangrove Specialist Group

[dominic@mangroveactionproject.org](mailto:dominic@mangroveactionproject.org)  
+63 919 006 7841

