



Blue Heart

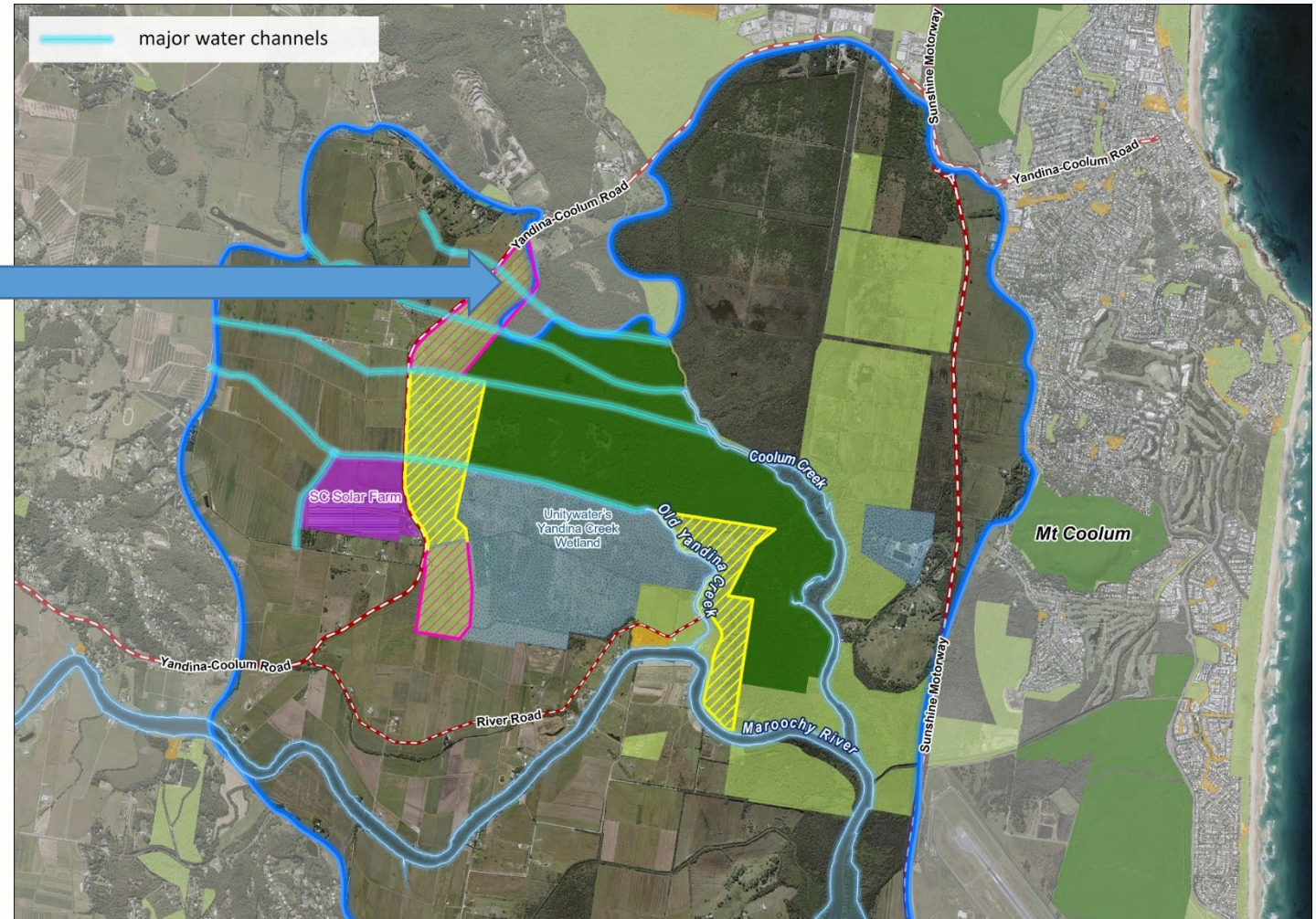
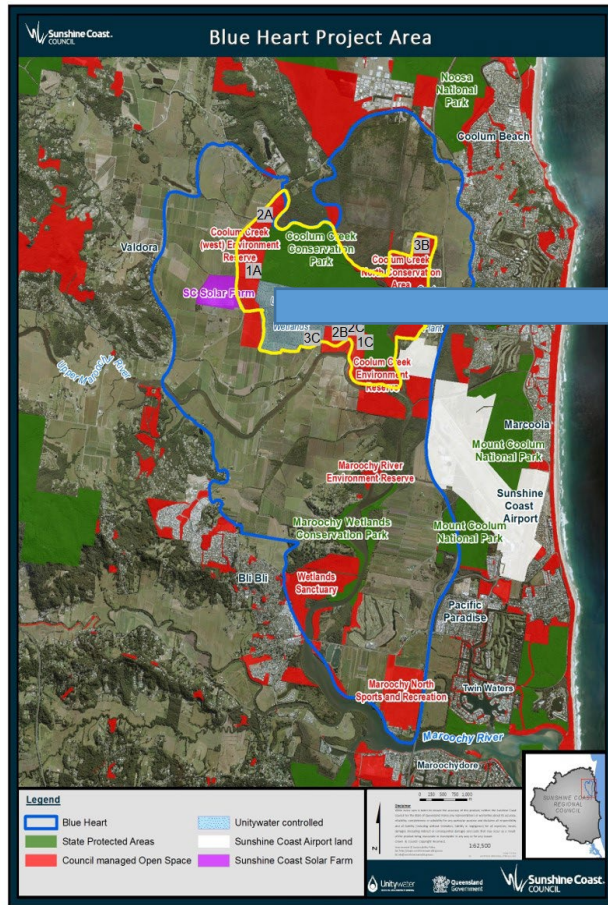
SUNSHINE COAST

Lessons Learnt

Brian Warner & Sonia Marshall



Blue Carbon farming trial planning



Lessons learnt – Kabi Kabi Peoples

“An important, but often overlooked aspect of the work, is the Fijian Government has implemented a 15% VAT on the export of Fijian Mitigation Outcome Units (carbon credits) through our agreement, which they reviewed and approved.

“This is in essence a price signal for South Pacific Island Nations and the first time the voluntary carbon market will pay a domestic government for the international export of this particular commodity. It sets an important example for other Nations in the Global South.”



Engagement

- Engage early and engage a lot
- Kabi Kabi Peoples are not stakeholders – they are equal partners
- Cultural Heritage Assessment has guided co-design of work



Legal challenges

- Who is the project proponent?
- Are there any encumbrances on the land? E.g leases, KRA, access, utilities
- Who does the land “belong” to once underwater?
- Have you got free, prior and informed consent?
- Who are your eligible interest holders?
- Who has the right to the carbon abatement interests?



State approvals and guidelines

- Do you need a Development Approval?
- And if you do need a DA; what will you trigger?
- Can you work under existing ADR's or guidelines?
- Are the structures lawful?
- Pre-logement meetings are essential.



Clean Energy Regulator

- Allow yourself time – the CER team is small, but mighty.
- Ensure you cover off on every aspect of the CFI Act
- Determine your permeance period – 25 or 100 years?
- Organise a meeting with the team before you submit
- Comprehensive hydrology report is essential.



Challenges of working in a transitioning environment

- Change of operational delivery
- Infrastructure age – can your roads/bridges/culverts handles the required machines for works?
- How is the land going to transition – do you need that expensive culvert or will a waterway crossing be suitable?
- Work in with the landscape – *focus on what you want, not what you don't.*



Thank you

Link to Blue Heart project

<https://www.sunshinecoast.qld.gov.au/council/planning-and-projects/major-regional-projects/the-blue-heart>

Fiji High Integrity carbon project

[Developing a High Integrity Carbon Scheme in Fiji \(youtube.com\)](https://www.youtube.com/watch?v=...)



Thank you.

See council's website for further details
www.sunshinecoast.qld.gov.au

